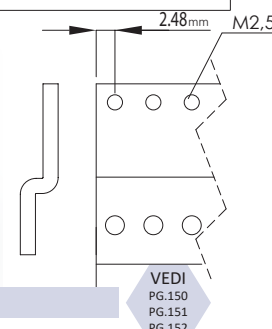


### Barre a "Z" tipo "A"



Larghezza in TE	Codice acquisto
42	0505.0901.42
<b>60</b>	<b>0505.0901.60</b>
84	0505.0901.84

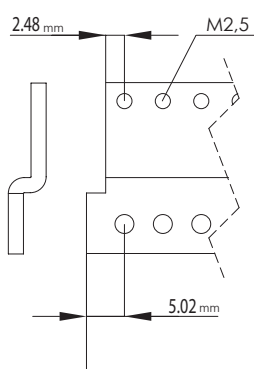
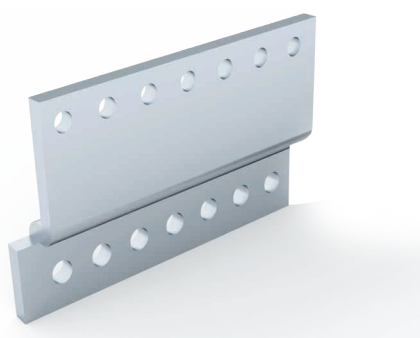
Alluminio 20/10



Utilizzo con profilo accorciato

VEDI  
PG.150  
PG.151  
PG.152

### Barre a "Z" tipo "B"



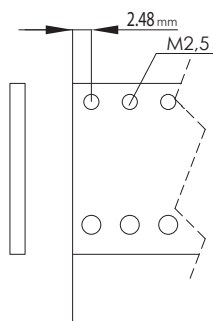
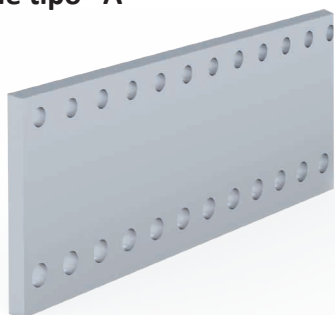
Larghezza in TE	Codice acquisto
42	0505.0902.42
<b>60</b>	<b>0505.0902.60</b>
84	0505.0902.84

Alluminio 20/10

Utilizzo con profilo accorciato

VEDI  
PG.150  
PG.151  
PG.152

### Barre piane tipo "A"



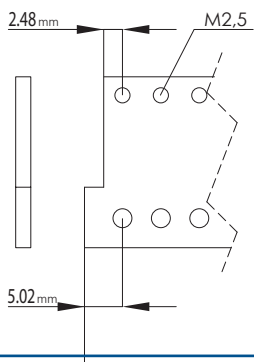
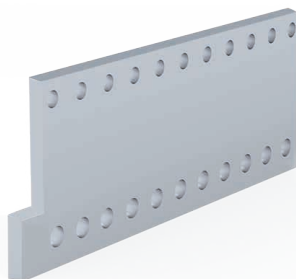
Larghezza in TE	Codice acquisto
42	0505.0905.42
<b>60</b>	<b>0505.0905.60</b>
84	0505.0905.84

Alluminio 20/10

Utilizzo con gli altri profili

VEDI  
PG.150  
PG.151  
PG.152

### Barre piane tipo "B"



Larghezza in TE	Codice acquisto
42	0505.0906.42
<b>60</b>	<b>0505.0906.60</b>
84	0505.0906.84

Alluminio 20/10

Utilizzo con gli altri profili

VEDI  
PG.150  
PG.151  
PG.152

### Grano



Dimensione	Codice acquisto
M 2,5	1000.2102.2508
<b>M 3</b>	<b>1000.2102.0308</b>

Utilizzo con chiave esagonale per grano

VEDI  
PG.163