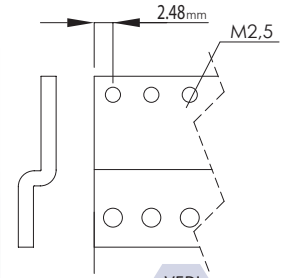


Barre a "Z" tipo A



Larghezza in TE	Codice acquisto
42	0505.0901.42
60	0505.0901.60
84	0505.0901.84

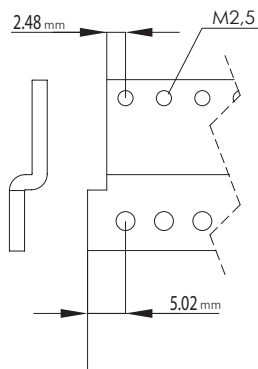
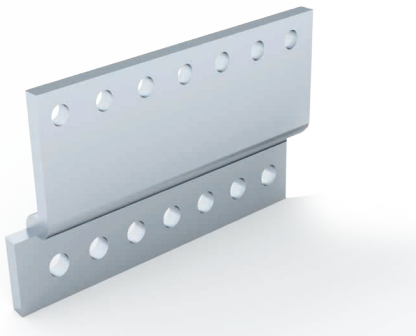
Alluminio 20/10



Utilizzo con profilo accorciato

VEDI
PG.202
PG.203

Barre a "Z" tipo "B"



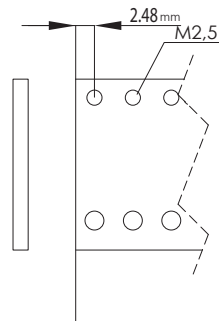
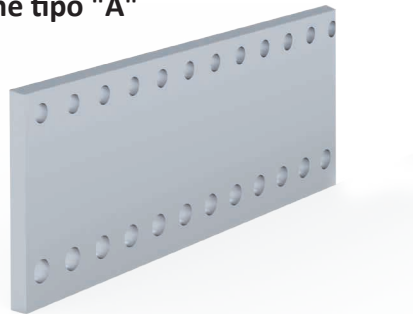
Larghezza in TE	Codice acquisto
42	0505.0902.42
60	0505.0902.60
84	0505.0902.84

Alluminio 20/10

Utilizzo con profilo accorciato

VEDI
PG.202
PG.203

Barre piane tipo "A"



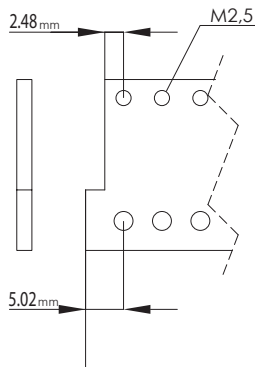
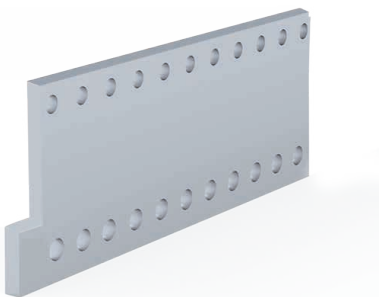
Larghezza in TE	Codice acquisto
42	0505.0905.42
60	0505.0905.60
84	0505.0905.84

Alluminio 20/10

Utilizzo con gli altri profili

VEDI
PG.202
PG.203

Barre piane tipo "B"



Larghezza in TE	Codice acquisto
42	0505.0906.42
60	0505.0906.60
84	0505.0906.84

Alluminio 20/10

Utilizzo con gli altri profili

VEDI
PG.202
PG.203

Grani



Dimensione	Codice acquisto
M 2,5	1000.2102.2508
M 3	1000.2102.0308

Chiave esagonale per grano

VEDI
PG.211