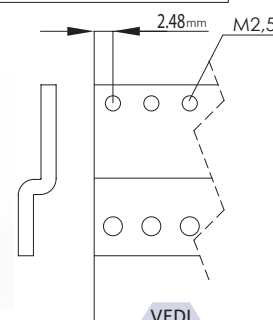


## Barre a "Z" tipo "A"



Larghezza in TE	Codice acquisto
42	0505.0901.42
60	<b>0505.0901.60</b>
84	0505.0901.84

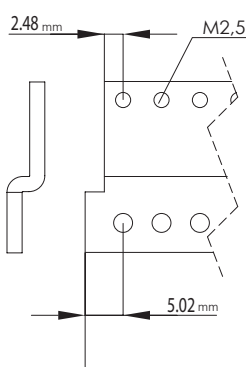
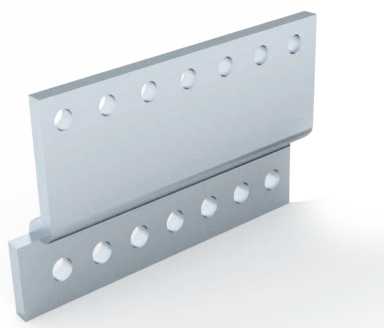
Alluminio 20/10



Utilizzo con profili accorciati

VEDI  
PG.180  
PG. 181

## Barre a "Z" tipo "B"



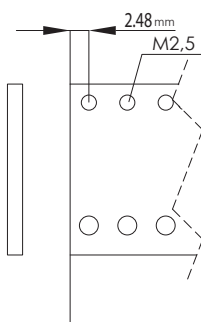
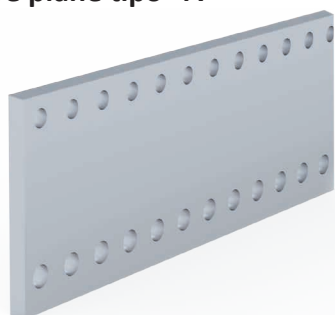
Larghezza in TE	Codice acquisto
42	0505.0902.42
60	<b>0505.0902.60</b>
84	0505.0902.84

Alluminio 20/10

Utilizzo con profili accorciati

VEDI  
PG.180  
PG. 181

## Barre piane tipo "A"



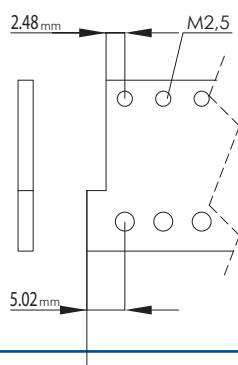
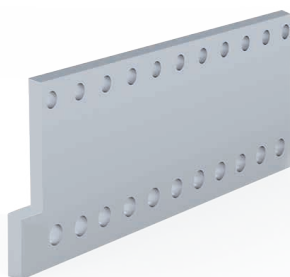
Larghezza in TE	Codice acquisto
42	0505.0905.42
60	<b>0505.0905.60</b>
84	0505.0905.84

Alluminio 20/10

Utilizzo con gli altri profili

VEDI  
PG.180  
PG. 181

## Barre piane tipo "B"



Larghezza in TE	Codice acquisto
42	0505.0906.42
60	<b>0505.0906.60</b>
84	0505.0906.84

Alluminio 20/10

Utilizzo con gli altri profili

VEDI  
PG.180  
PG. 181

## Grani



Dimensione	Codice acquisto
M 2,5	1000.2102.2508
M 3	<b>1000.2102.0308</b>

Chiave esagonale per grano

VEDI  
PG.189